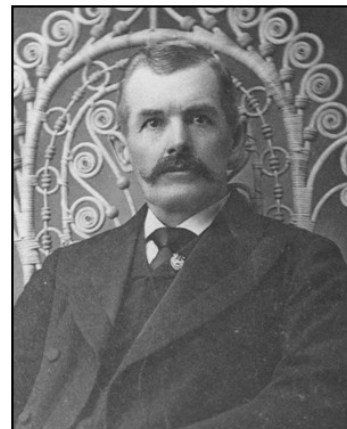
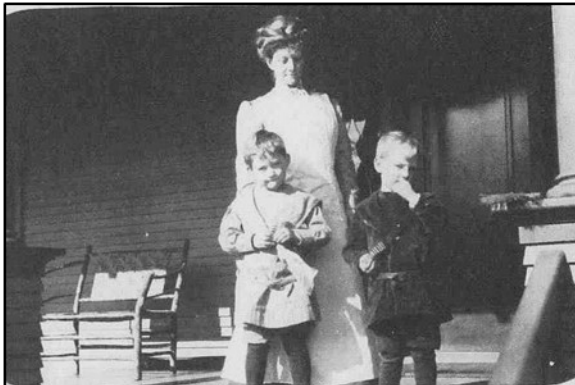


# *Kent Historical Museum Scavenger Hunt*

As you find each artifact, write its location in the house in the blank.



As you find these historical photos, write the subject of each photo in the blank.



# *Kent Historical Museum Scavenger Hunt*

(continued)

As you explore, see if you can find the answers to these questions:

- How much did the Dulcimer Organette originally cost? \_\_\_\_\_
- What year did Martha Anna Ramsay graduate from Kent High School? \_\_\_\_\_
- Who was the captain of the river boat Lily? \_\_\_\_\_
- Who was the Lettuce Queen in 1935? \_\_\_\_\_
- What year did Kent become a city? \_\_\_\_\_
- How many stars are on the US flag from 1850? \_\_\_\_\_
- What caused the fire that burned a whole business block in 1914? \_\_\_\_\_
- What did the town of Tolt change its name to? \_\_\_\_\_
- How many people lived in the Bereiter House in 1910? \_\_\_\_\_
- Who was Kent's first mayor? \_\_\_\_\_

